

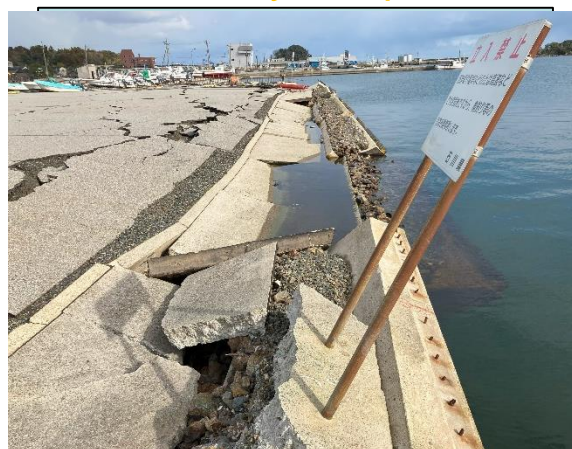
Piles/Sheet Piles in Liquefied Ground: Findings from The 2024 Noto Earthquake Reconnaissance

Speaker: Dr Siavash Manafi

Researcher, Scientific Research Section, GIKEN LTD., Tokyo, Japan

Seminar overview:

This seminar will discuss the performance of piles and sheet piles in liquefied ground, beginning with results from reconnaissance of the 2024 Noto Earthquake and large-scale model tests, and concluding with analytical numerical modeling of these structures in liquefied ground.



Destruction of water front structure

Biography:

Dr. Siavash Manafi was awarded his PhD at Kyushu University (KU) in Japan. He served as a postdoctoral researcher at KU from 2018 to 2020. Since 2020, he has been working in the Japanese industry as a researcher/engineer. His current research focuses on the performance of piles and sheet piles in liquefied ground.

Monday, 29th April, 4-5pm, Corpus Christi, Meeting Room I4 (Old House), Trumpington Street

Zoom: <https://zoom.us/j/99835165727?pwd=VJV4MWxYeVQxeJhGTEkyT0hCd3N4UT09>

Queries: Douglas Morley, dm909@cam.ac.uk